

## Pont Ste Maxence / Agnetz

The Avenue Verte London <> Paris



**Départ**  
Pont-Ste-Maxence

**Arrivée**  
Agnetz

**Durée**  
1 h 37 min

**Distance**  
24,34 Km

You will cycle into the heart of the Oise - Pays de France Regional Nature Reserve, emblematic of the southern Oise landscapes and atmospheres. Along the way, discover municipalities and forests sharing the same rich historic heritage: the Castle of Chantilly, the Potager des Princes («Princes' Kitchen Garden»), Senlis Cathedral, Royal Moncel Abbey, the forests of Chantilly and Halatte... An itinerary made for history enthusiasts and nature lovers.

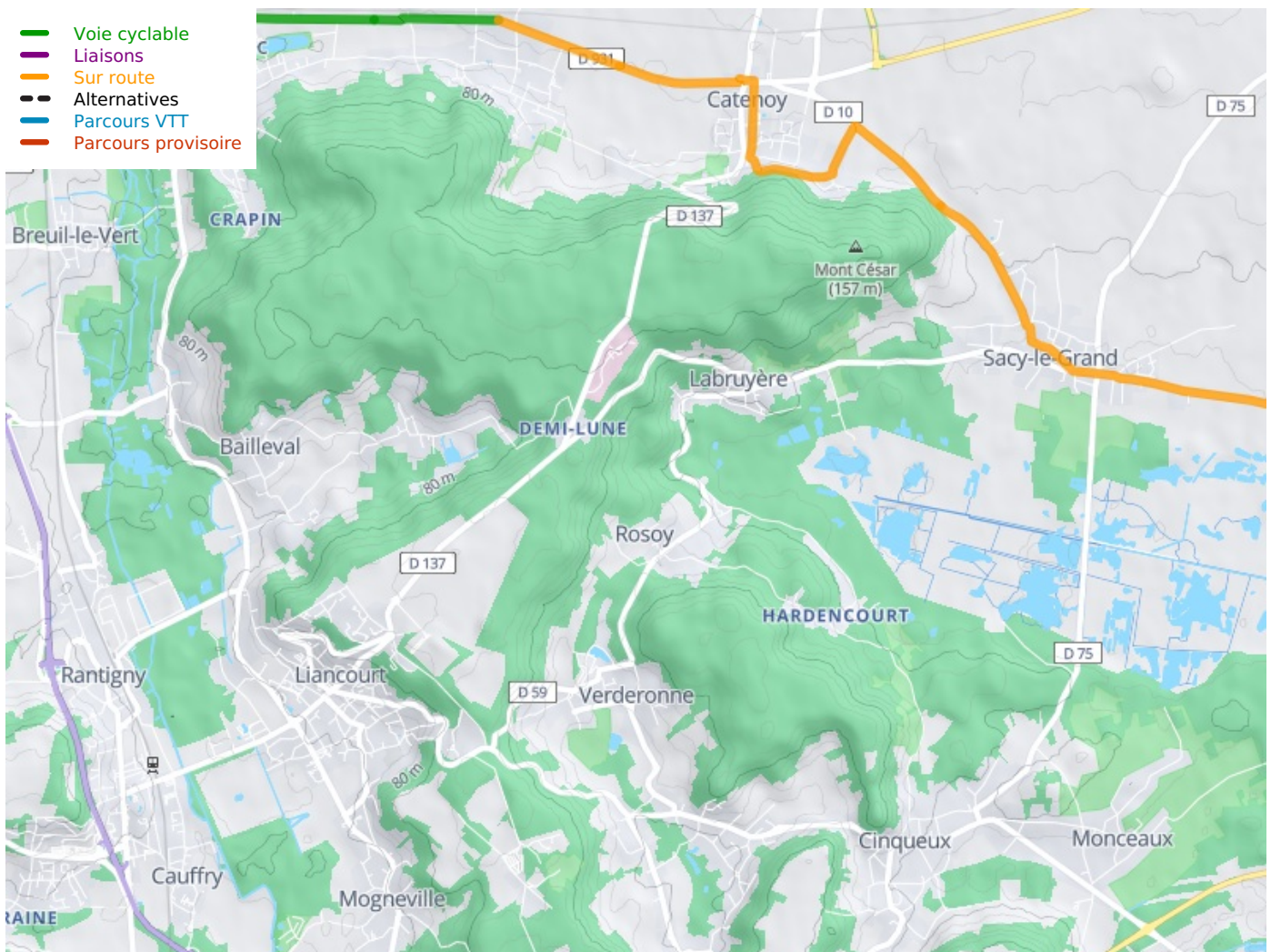
### The cycle route

Bicycle path along the D1017 from Pont Ste-Maxence to St-Martin Longueau. Small county roads with occasional heavy traffic. Dry ascent before Clermont.

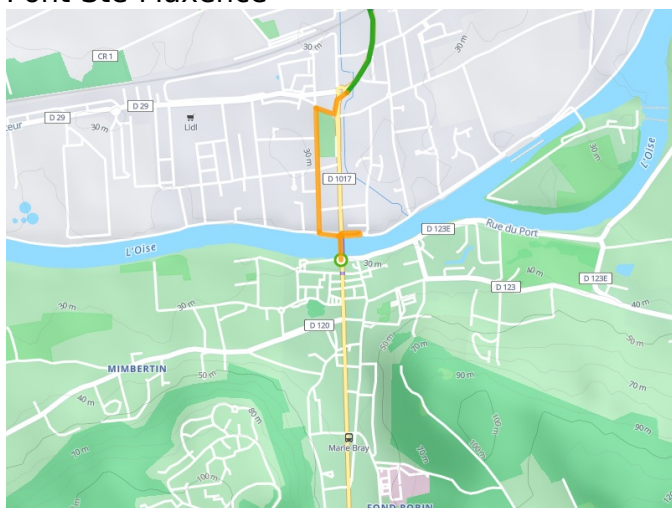
### SNCF railway stations

TER Paris-Nord > Creil > Compiègne > St-Quentin - link with Beauvais via Creil by TER Paris-Nord > Creil > Beauvais : Pont-Ste-Maxence station - Intercité Paris - Amiens : Clermont-de-l'Oise station (45')

- Voie cyclable
- Liaisons
- Sur route
- - - Alternatives
- Parcours VTT
- Parcours provisoire



**Départ**  
Pont-Ste-Maxence



**Arrivée**  
Agnetz

